

## Dragons

<https://www.smithsonianmag.com/science-nature/where-did-dragons-come-from-23969126/>

<https://justhistoryposts.com/2018/09/10/mythical-creatures-a-history-of-dragons/>

In England, Geoffrey of Monmouth (most famous for creating the legend of King Arthur) who was writing in the 12<sup>th</sup> century also popularised the legend of the dragon. In one such story, the wizard Merlin is brought in by the leader Vortigern who is attempting to build a tower to defend against the Anglo-Saxons, but the tower keeps sinking into the ground. Merlin has a vision and tells Vortigern that underneath the tower was a pool with two sleeping dragons, one white, and one red. Vortigern orders the pool to be drained, and this causes the two dragons to begin fighting. Merlin delivers a prophecy that the white dragon will triumph over the red, symbolising England's conquest of Wales, but declares that the red dragon will eventually return and defeat the white one. Even today, the Welsh flag features the large red dragon.

## In Skyrim

[https://elderscrolls.fandom.com/wiki/Dragons\\_\(Skyrim\)](https://elderscrolls.fandom.com/wiki/Dragons_(Skyrim))

“Although seeming rather beast-like, they are profoundly intelligent, capable of speech, written language, and comprehension of other languages.”

Unlike the stories of dragons in ancient Europe but similar to Tolkien's dragon, Smaug. Could look into this merging of cultures

Serpentine dragons (only in dragonborn add-on) greatly resemble Fell Beasts from J.R.R Tolkien's *The Lord of the Rings*.

## Pokemon

[https://nintendo.fandom.com/wiki/Dragon\\_\(Pokémon\\_type\)](https://nintendo.fandom.com/wiki/Dragon_(Pokémon_type))

Charizard vs Rayquaza

Also check out Drampa, Dragonite, and Salamence

In Ancient Western History

<https://www.amnh.org/exhibitions/mythic-creatures/dragons/european-dragons>

In Ancient Eastern History

<https://www.amnh.org/exhibitions/mythic-creatures/dragons/asian-dragons>

In Literature

- Beowulf

<https://www.bl.uk/medieval-literature/articles/monsters-and-heroes-in-beowulf>

*wisse he gearwe  
þæt him holtwudu helpan ne meahte,  
lind wið lige. Sceolde lændaga  
æþeling ærgod ende gebidan,  
worulde lifes, ond se wyrm somod.* (ll. 2339–43)

[he clearly understood  
that the forest-wood could not help him,  
the wooden shield against the flames. The foremost prince  
would have to endure the end of his transitory days,  
his life in the world, and the dragon with him.]

The point is not that humans are the real monsters of *Beowulf*, nor that monsters are the true heroes. Rather, it's that the same qualities can be found in both – for better or worse. Beowulf's supreme strength brings his character uncomfortably close to Grendel's, but it also makes him the only one capable of standing up to the monster.

In D&D

Chromatic vs Metallic -> evil vs good

Color relates to element relates to abilities and environment

Can polymorph into humanoid

True dragons become more powerful as they age

Inherently magical, more feline than reptilian

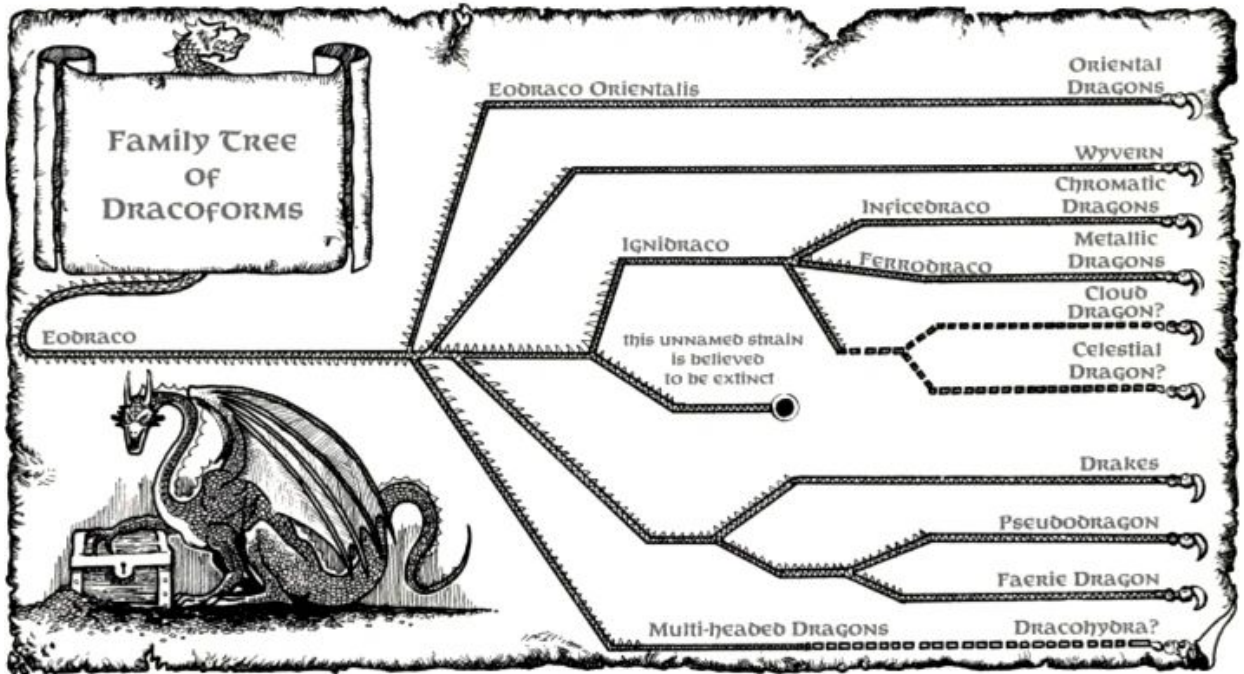
Where did they come from?

-Asgorath sent asteroid at Abeir-Toril which drastically changed the planet, cloned planet  
and gave one to gods and one to elementals

-Wasn't an asteroid but actually dragon eggs and dragons are his children

- Humanoid scholars believe they evolved from extreme conditions after asteroid event

# DRACONOMICON



## Origins

<https://www.nytimes.com/2003/04/29/science/from-many-imaginations-one-fearsome-creature.html>

- [Dr. David E. Jones] argues that the dragon image, fermented in the primal soup of man's first nightmares, is a composite of the carnivores who fed on human ancestors when they were tree-dwelling monkeys: the pythons, the big cats and the raptors.
- First drawn by the sumerians of 5000BC
- Book of Job has dragon
  - <https://www.biblegateway.com/passage/?search=Job+41&version=NIV>
- Source of myths could be fossils

## How could real life dragons have evolved?

<http://www.bbc.com/earth/story/20160929-how-evolution-could-give-rise-to-real-life-dragons>

- Elongated dragons would come from the same ancestor as snakes
- Flying dragons: 6 limbs is going to be difficult to achieve
- A wyvern would have to make lots of sacrifices, small torso and legs

- Could come from a giant pterosaur
- Fire breathing? Bombardier beetles